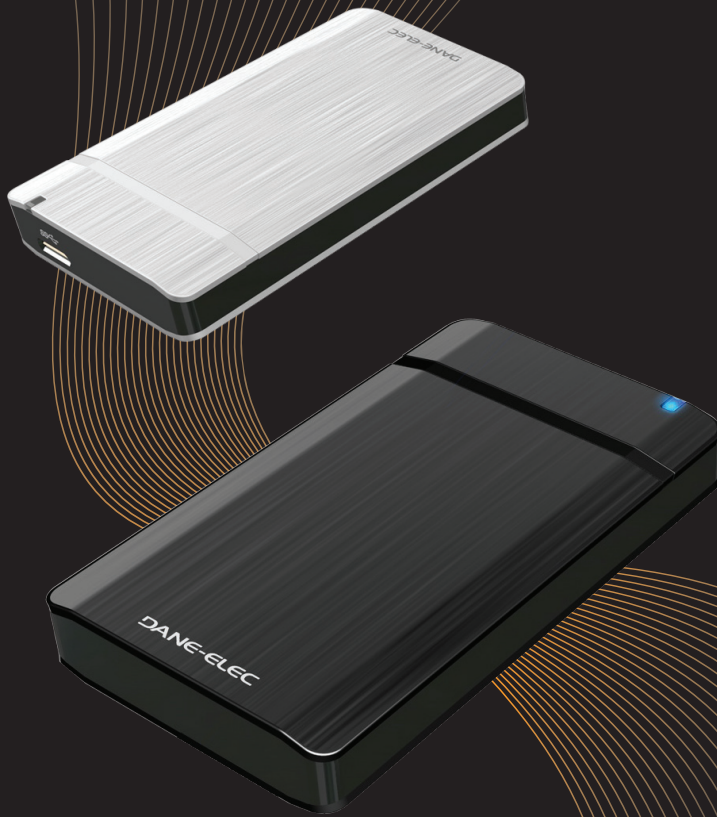


DANE-ELEC

So Mobile SuperSpeed

Portable USB 3.0 Hard Drive

2.5" | 500GB | 640GB



So Mobile SuperSpeed is the world's first portable USB 3.0 hard drive. Experience the amazing performance of USB 3.0 (up to ten times faster than USB 2.0). Transfer files and perform data back-up without watching the clock. This sleek design combines style and performance into one easy to use device.

- **SuperSpeed USB 3.0**
- **Backwards compatible with USB 2.0***
- **Amazing transfer and back-up speeds**
- **Easy to use and install**
- **Compact, lightweight with textured case**

Packaging Contents

1. Hard Disk Drive
2. USB 3.0 Cable
3. Quick Start Guide

TECHNICAL SPECIFICATIONS	
Connection	USB 3.0 Port (backward compatible to USB 2.0)
Hard Disk Drive	1 SATA HDD
Format	FAT 32 or NTFS
PC Compatible	Microsoft® Windows® XP/Vista/Win7
Mac	Mac not supported by USB 3.0 at present*
Configuration Requirements	Microsoft® Internet Explorer 5.0 or higher (or other) with internet connection for software updates

*This USB 3.0 device can be plugged into a USB 2.0 host provided you use the USB 3.0 Cable supplied, however, the USB 3.0 device will only obtain USB 2.0 throughputs while connected into a USB 2.0 host. Once USB 3.0 device is plugged back into a USB 3.0 host your speeds will return to SuperSpeed USB ranges. (Remember performance may vary based on operation system or environment)

Part Number	TBD
UPC / EAN	TBD
Colors	White 500GB and Black 640GB
Capacities	500GB, 640GB
Dimensions	4.7 x 3 x 0.75 inches 120 x 77 x 19 mm
Weight	0.7 lbs, 32 kg

1 GB = approx. 1,000 MB. 1 MB = approx 1million bytes.
Due to formatting, accessible capacity will be slightly less.

Information for internal and distributor use only.

