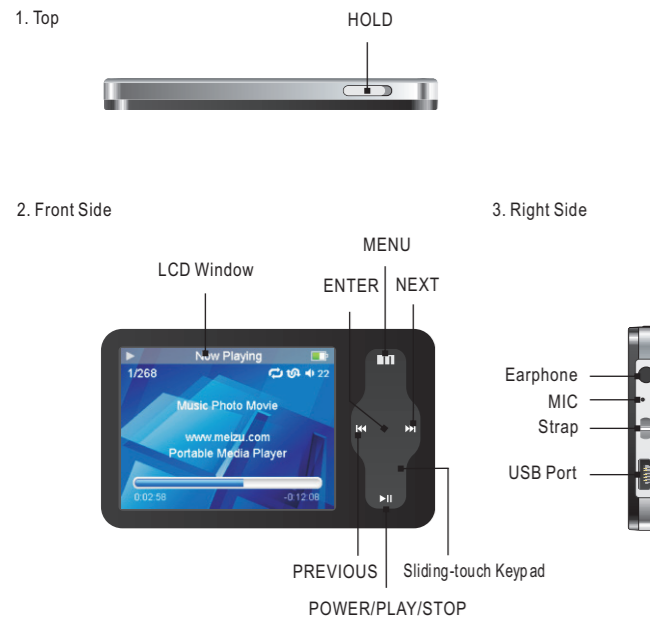


Parts and Names



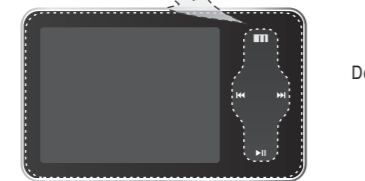
Protection Film on the Player

Protection Film on the Front Panel

The surface of player is easy to be contacted with other objects during use. To protect the player from scratching, the surface of the front panel is attached with a transparent protection film. Please keep the film on the front panel of the player.



The surface of the player is attached with a protection film before leaving factory.

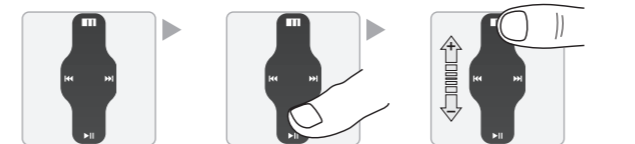


Do not peel off the Mask!

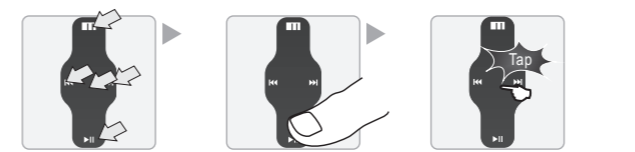
Touch Keypad

Touch keypad is an important part of the player, including sliding touch control and key operations, which used for controlling operations of all kinds of functions of the player.

Sliding touch keypad:

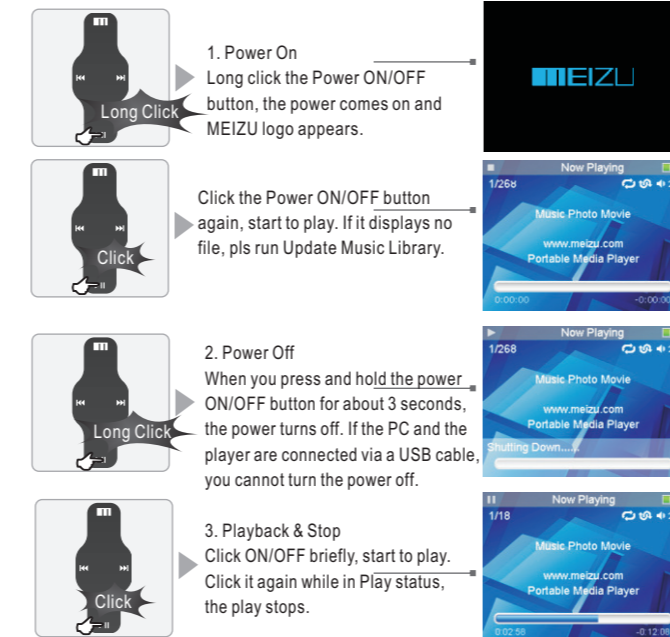


Clicking Key:

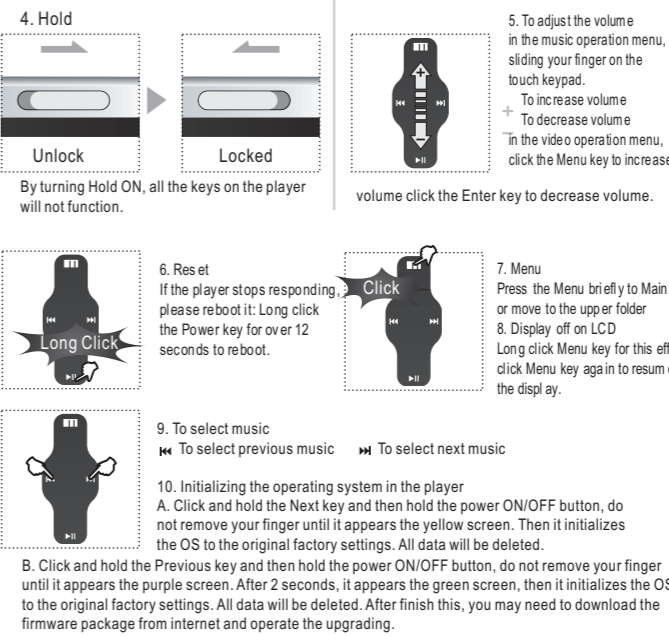


1. While HOLD is locked, any operation will be invalid.
2. Too fast operation will be easy to cause error.
3. Slide your finger on the touch keypad up and down to reach the desired operation.
4. Tap the center of keypad to enter the submenu, or conduct an operation.
5. Clicking Menu key to go back to the previous menu interface or cancel an operation.
6. Click Next button to enter the submenu while setting EQ.

Using Buttons

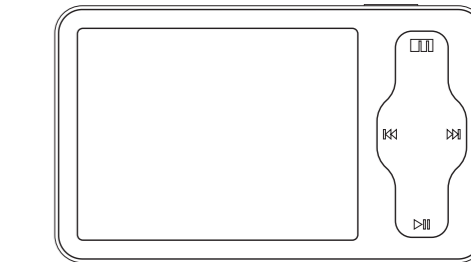


Using Buttons



MEIZU

by DANE-ELEC



Quickstart guide
miniplayer
slim

www.danedigital.com

Important Cautions



Turn On / Auto Power Off

To power on the player, make sure it has enough power, long press the Power On/Off button for over 3 seconds. Click it again to start play. When there is no button operation for about 3 minutes while the player is stopped, it is automatically turned off. To power off the player, press and hold the Power On/OFF button until it finishes with shutting down procedure.



Reset Mini Player

When it is dead caused by improper operation, you have to reset your mini player. Disconnect it to a USB cable or AC Adapter, press and hold on the Power button(▶) key for over 12 seconds to reboot.



Update Music Library

After finish copying the music, using Main Menu-Music-Update Music Library on the player before your listening music so that you can organize and assort them by artist, album or genre. Otherwise, you can only browse the new copied songs from All Songs on the player.



Initialize OS to the Original Factory Settings

When it is not able to turn on and disable connecting the player to your PC after resets, please click and hold the Next key (▶) and Power On/OFF button for about 8 seconds to initialize the OS to the original factory settings. All data will be deleted in the player.

Package Contents

Congratulations on the purchase!
Welcome to visit Meizu's website! www.meizu.com .

The Meizu's home page provides the overview of company and products, other related information, and answers to common questions. Firmware and software updates are also available as well as the most recent information about your Meizu product.

Stand Accessories Provided into the package:



Earphones



USB Cable



Installation CD



Quick Start

Note: Design and specifications are subject to change without notice.

Installation CD

System Requirement

Pentium 133MHz or Higher
32MB Main Memory or Higher
40MB Hard Disk Space or More
CD-ROM Drive
USB Port (2.0)
Windows 98SE/ ME / 2000 / XP



Install Software

Insert the installation CD into the CD-ROM drive. The following screen appears after inserting the CD.

The installation CD contains the following contents:

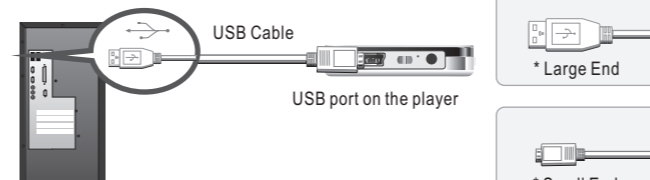
- Device Driver for Windows98
- Video Converter for MEIZU MiniPlayer Video Converting Tools
- PDF Manual

(Note: Window 98 driver is only required for OS with win 98 or lower version. If you are using Win2000 or above, you will not need to install driver. The PC will automatically recognize the player when it is connected. The video convert tool installation is required for video conversion. When installation is automatically not started, execute the setup.exe in the installation CD, and then the Manager program is automatically setup.

Connecting Mini Player

Connecting to a Computer

Connect the small end to player, large end to PC.



USB port on the PC

1. Turn it on before your connecting

Power it on, then connect the player to the computer using the USB cable supplied in the package. It will be charged using the power supply from the PC.



Connecting to a computer during it power on, it will charge its built-in battery and appears as the left figure.
Note: While connecting to PC, tracks and operations cannot be applied. Pulling out the PC connection cable from the player before your listening to music or viewing a picture and so on.



When copy files, you should save the video and photo files to specified directories of the player, video files into Video directory, photo files into Pictures directory. Otherwise, they won't be identified by Mini Player.

This page was intentionally left blank

Precautions for Using the Product

Do not subject the player to severe impact or jarring. Vibration experienced during walking or exercising will not affect the player. However, dropping a heavy object on the player may result in damage or sound distortion.

Be careful when storing the set and avoiding water and wet locations.

Please do not repair or disassemble this product by yourself.

Please do not operate this product while driving.

Please do not use this product in the place where forbid to use for electronics products.

Avoid using the speaker at high volumes. Hearing experts advise against exposure to loud music over extended periods.

Please backup the important information on your note book, any repair result from electricity shock, static electricity, change of battery or incorrect using may cause change, damage or delete the files stored in the product.

[Pls refer to the User's Manual provided in the Installation CD for more details.](#)